

WESTERN SYDNEY CONFERENCE CENTER PENRITH

LANDSCAPE DEVELOPMENT APPLICATION

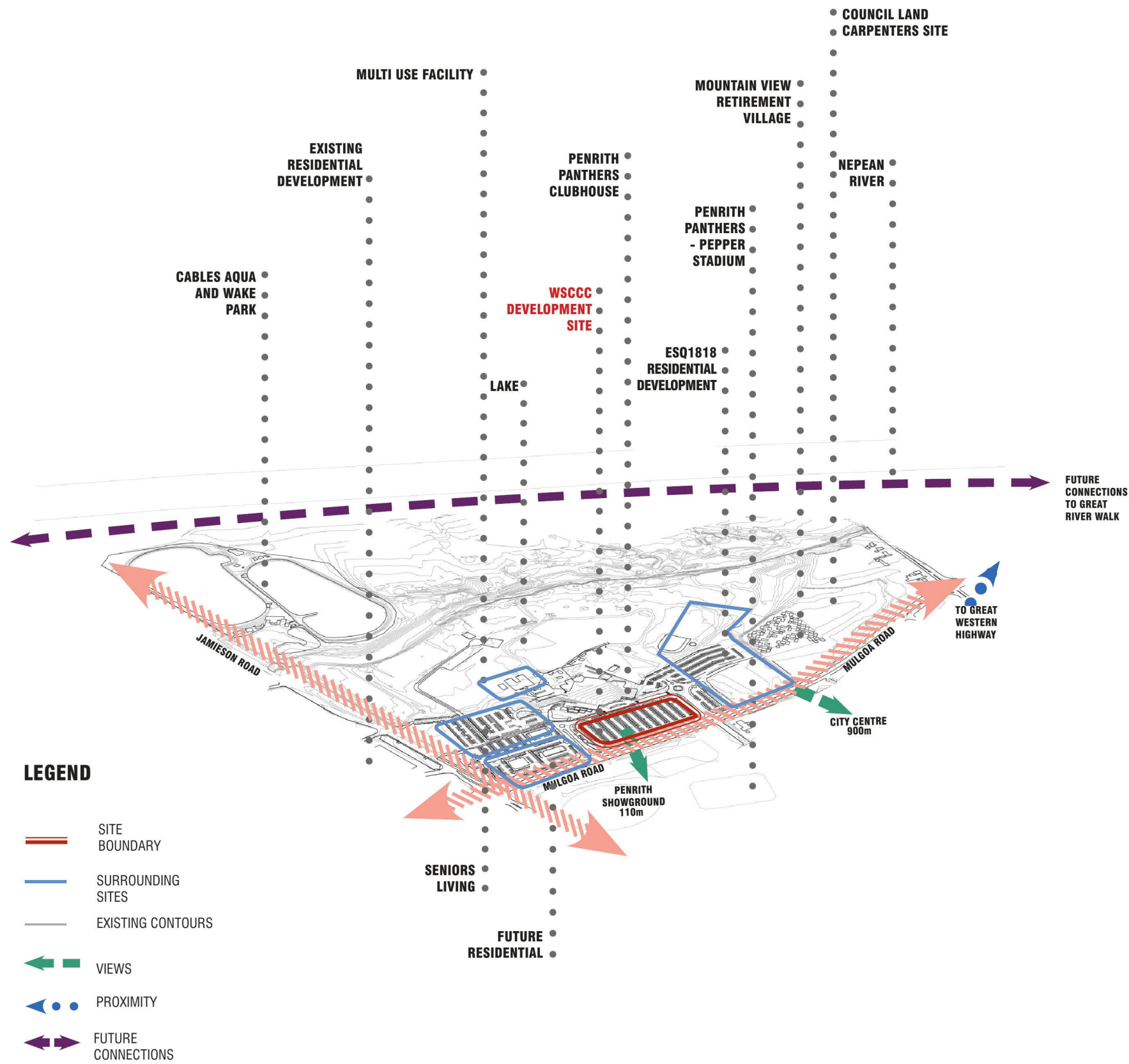
APRIL 2018

DRAWING LIST

TITLE	DWG No.	Rev
TITLE PAGE	OC-L-000	A
SITE DESIGN: CONTEXT ANALYSIS	OC-L-001	A
SITE DESIGN: SITE ANALYSIS	OC-L-002	A
SITE DESIGN: PRINCIPLES	OC-L-003	A
LANDSCAPE MASTERPLAN: CONCEPT PROPOSAL	OC-L-100	A
LANDSCAPE MASTERPLAN: CONCEPT TREE INTEGRATION	OC-L-101	A
LANDSCAPE CONCEPT FEATURE STRATEGY	OC-L-102	A
LANDSCAPE MASTERPLAN: STAGE 1 PROPOSAL	OC-L-103	A
LANDSCAPE PLAN: STAGE 1 DETAILED CIVIC CENTRAL	OC-L-200	A
LANDSCAPE SECTION: STAGE 1 CIVIC CENTRAL A	OC-L-300	A
LANDSCAPE SECTION: STAGE 1 CIVIC CENTRAL B	OC-L-301	A
MATERIALS SCHEDULE	OC-L-400	A
INDICATIVE PLANT SCHEDULE	OC-L-401	A



SITE DESIGN CONTEXT ANALYSIS



DEMOGRAPHIC ANALYSIS

PEOPLE TO CONSIDER:
Residents
Tourists
Workers
Football fans
Elderly

POTENTIAL PROGRAMMATIC OPPORTUNITIES

PENRITH PANTHERS CLUB

GAME DAY
FESTIVITIES



MEMBERS
FUNCTIONS



PUBLIC
EVENTS



COMMUNITY

MARKETS



EDUCATION
SEMINARS



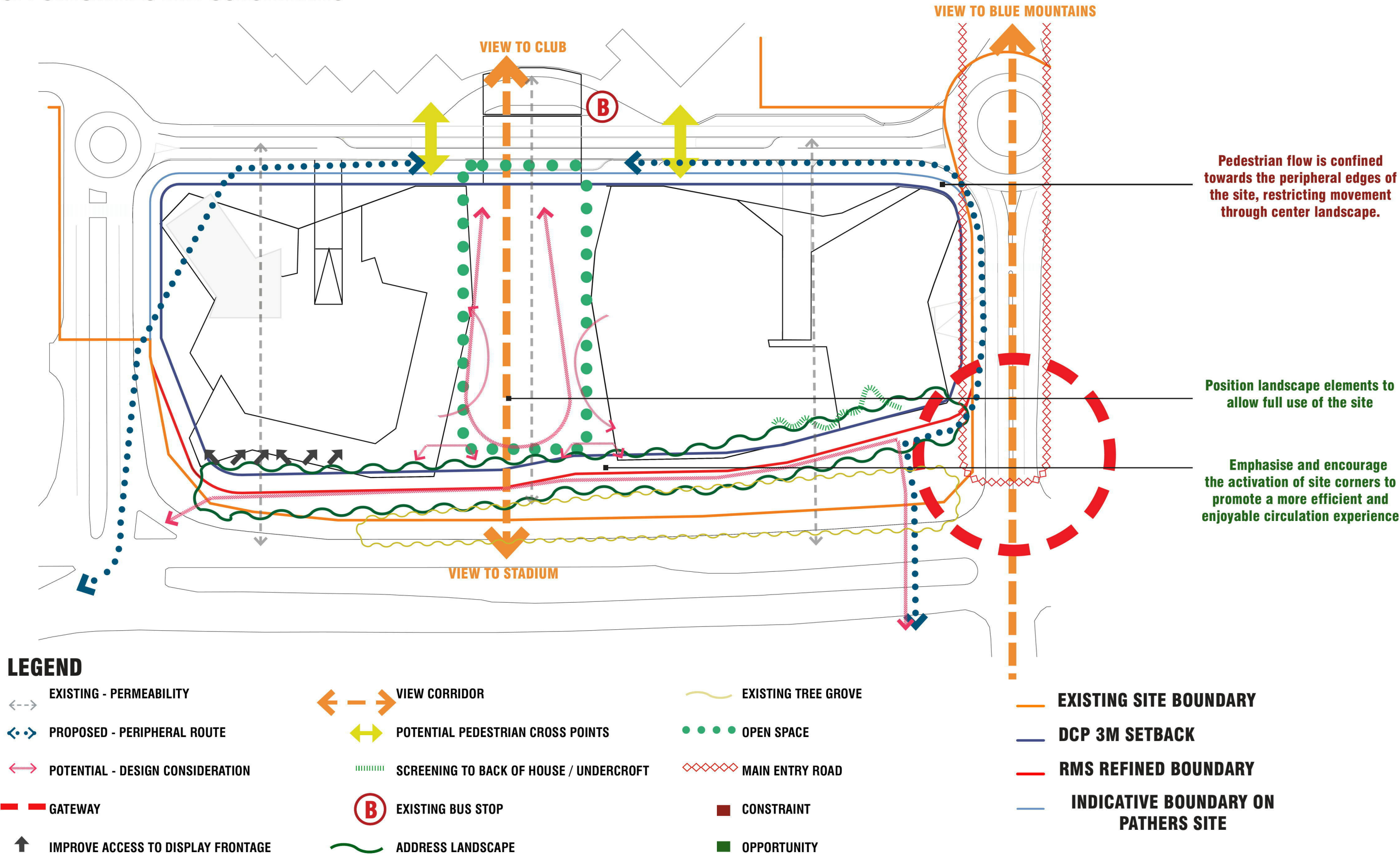
CONFERENCE CENTER

OUTDOOR
PROGRAMMING

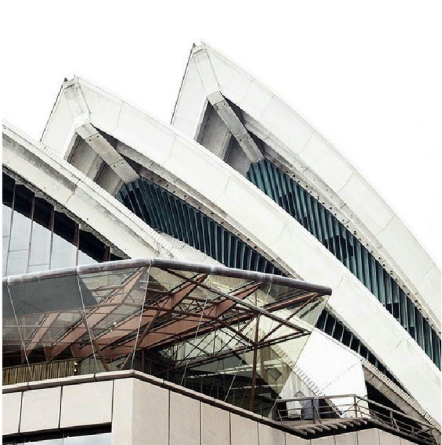


SITE DESIGN SITE ANALYSIS

OPPORTUNITIES AND CONSTRAINTS

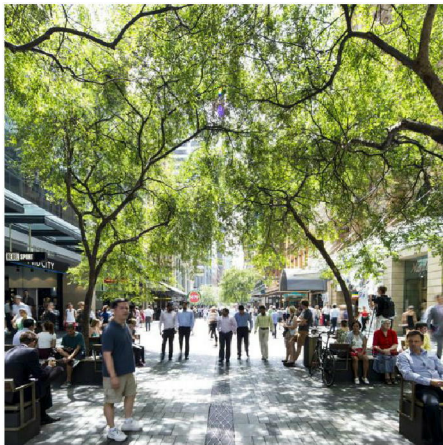


SITE DESIGN PRINCIPLES



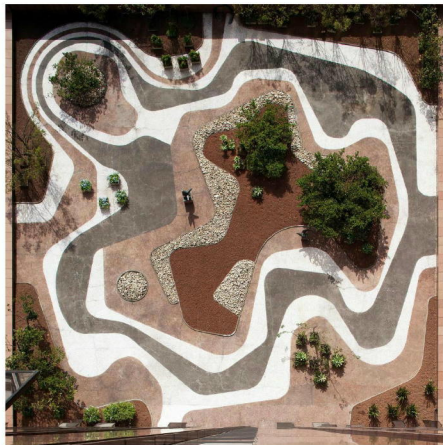
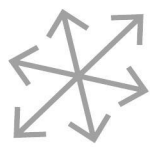
AN ICONIC LANDMARK FOR THE CITY

- Create an iconic landmark, public space and destination for Penrith which can be enjoyed by the community, visitors, residents and workers



A LIVE, WORK, PLAY ENVIRONMENT

- Focus attention to key usable places
- Provide a range of spaces for people to congregate, relax and enjoy



CREATE DYNAMIC OPEN SPACE

- Identifiable spaces which are differentiated from one another through materials, form, and programs



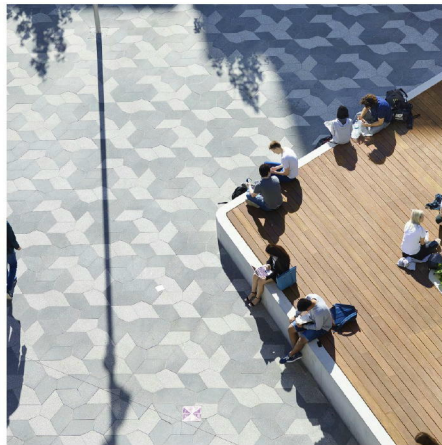
ACCOMMODATE FOR LOCAL DEMOGRAPHIC

- Provision of amenities to create a multifunctional space for a diverse range of users and activities



PROMOTE ACTIVITY AND ENGAGEMENT

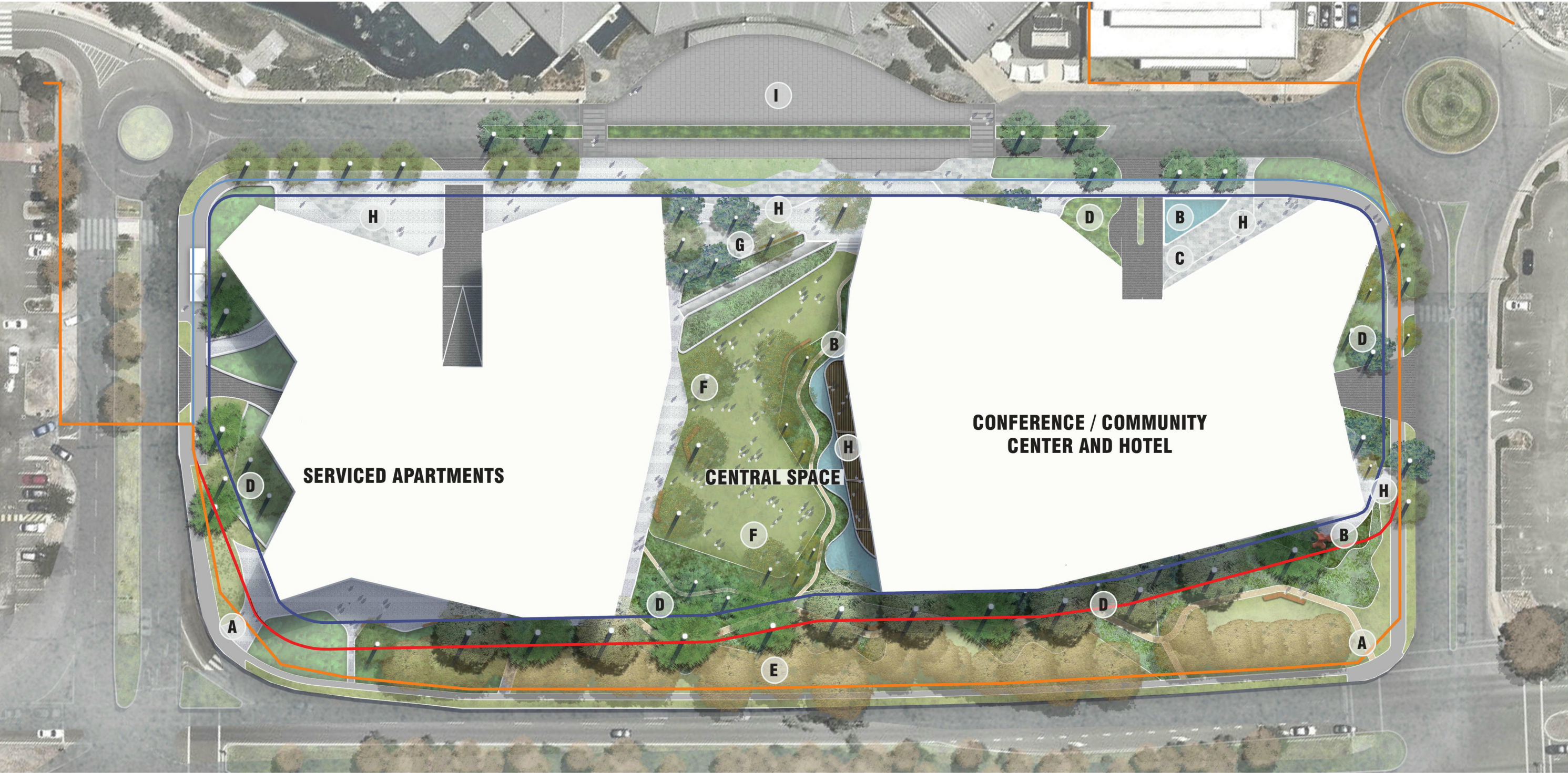
- Provide a diverse range of spaces for varied user demographics
- Impliment several adaptable spaces to accomodate temporary activation



PROVIDE SPACE TO CONGREGATE AND REFLECT

- Provide intimate gathering spaces to accomodate passive recreation for both individuals and groups

LANDSCAPE MASTERPLAN - CONCEPT PROPOSAL



KEY SPACES:

A

PRIMARY SITE ACCESS POINT

B

ICONIC ELEMENT

C

DROP-OFF ZONE FOR FUTURE DEVELOPMENT

D

MASS PLANTED BUFFER ZONE

E

MULGOA ROAD FRONTAGE

F

OPEN ACTIVE BREAKOUT ZONE

G

CENTRAL PEDESTRIAN PLAZA

H

SPILL OUT SPACE

I

SHARED ZONE

TURF

TIMBER

MASS PLANTING

DENSE MASS PLANTING

PAVING TYPE 01

PAVING TYPE 02

PAVING TYPE 03

SHARED ZONE PAVING

DRIVEWAY PAVING

WATER

TIMBER FEATURE SEATING

LANDSCAPE ARCHITECT
O C U L U S
landscape architecture | urban design
level 1/5 wilson street | po box 307 | newtown | nsw | 2042
p. 02 9557 5533 | f. 02 9519 8323 | australia@oculus.com.au

CLIENT
CABE

ARCHITECTS
TURNER

PROJECT
WESTERN SYDNEY COMMUNITY AND CONFERENCE
CENTER PENRITH LANDSCAPE DEVELOPMENT APPLICATION

ISSUE
DEVELOPMENT APPLICATION

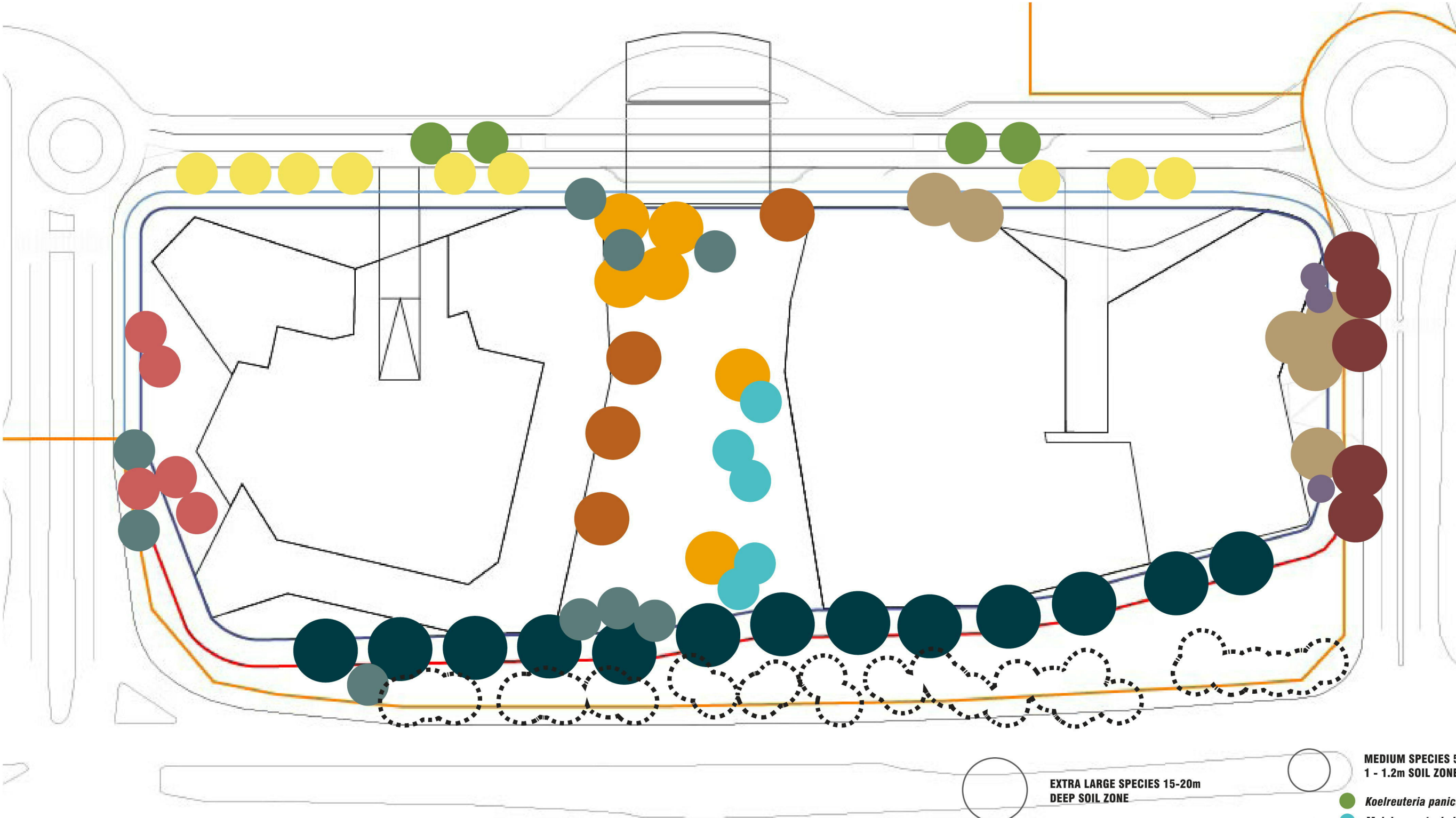
DRAWING NAME
MASTERPLAN: CONCEPT PROPOSAL

DATE: 06.04.18
JOB NUMBER: S17.032
DRAWN BY: CM/ST

NORTH
SCALE
1:750 @ A3
7.5 0m 7.5 15m

DRAWING NUMBER
OC - L - 100
REVISION
A

LANDSCAPE MASTERPLAN - TREE INTEGRATION



LEGEND

EXISTING TREES WITHIN MULGOA ROAD TO BE RETAINED

- EXTRA LARGE SPECIES 15-20m DEEP SOIL ZONE
 - LARGE SPECIES 10-15m 1.2 - 1.6m SOIL ZONE
 - MEDIUM SPECIES 5-10m 1 - 1.2m SOIL ZONE
 - SMALL SPECIES 1-5m 1m SOIL ZONE
- Koelreuteria paniculata*
 - Melaleuca styphelioides*
 - Tristaniopsis laurina*
 - Acer buergerianum*
 - Sapium sebiterum*
 - Angophora bakeri*
 - Fraxinus angustifolia 'Raywood'*
 - Waterhousea floribunda*
 - Jacaranda mimosifolia*
 - Eucalyptus saligna*
 - Lagerstoemia indica*

LANDSCAPE CONCEPT FEATURE STRATEGY



LEGEND

LIGHTING

HIGHLIGHT

OVERHEAD

BOLLARD

FEATURE

PATHWAY

SIGNAGE

PATHWAY WAYFINDING

INTEGRATED WAYFINDING

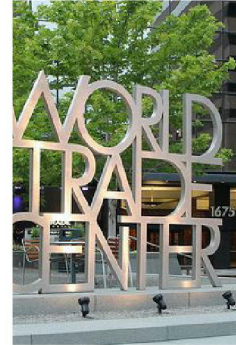
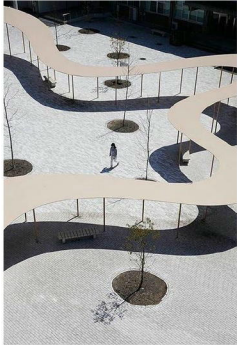
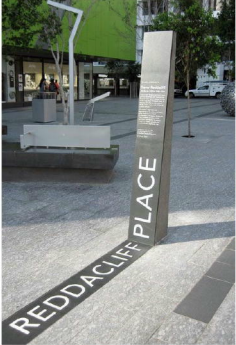
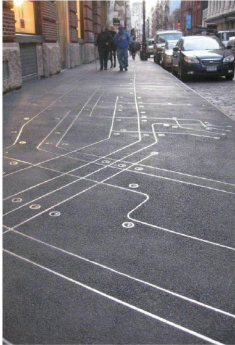
ICONIC

PUBLIC ART

STRUCTURE

ENTRY MARKER

HIGHLIGHT OVERHEAD BOLLARD FEATURE PATHWAY PATHWAY INTEGRATED ICONIC STRUCTURE ENTRY MARKER



LANDSCAPE MASTERPLAN - STAGE 1 PROPOSAL



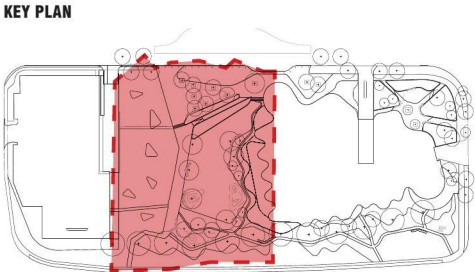
LEGEND

TURF	PAVING TYPE 01	DRIVEWAY PAVING	TEMPORARY LAWN
TIMBER	PAVING TYPE 02	WATER	TEMPORARY PLANTING
MASS PLANTING	PAVING TYPE 03	TIMBER FEATURE SEATING	TEMPORARY PAVING
DENSE MASS PLANTING	SHARED ZONE PAVING		

LANDSCAPE PLAN - STAGE 1 DETAIL CIVIC CENTRAL



- LEGEND**
- TURF
 - TIMBER
 - MASS PLANTING
 - DENSE MASS PLANTING
 - PAVING TYPE 01
 - PAVING TYPE 02
 - PAVING TYPE 03
 - SHARED ZONE PAVING
 - DRIVEWAY PAVING
 - WATER
 - TIMBER FEATURE SEATING
 - TEMPORARY LAWN
 - TEMPORARY PLANTING
 - TEMPORARY PAVING

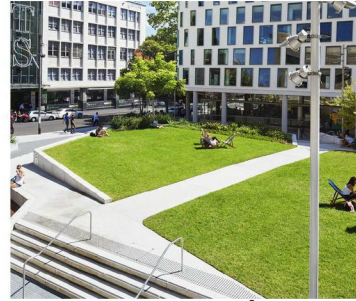


LANDSCAPE SECTION - STAGE 1 PROPOSAL CIVIC CENTRAL A

**SHARED
ZONE**



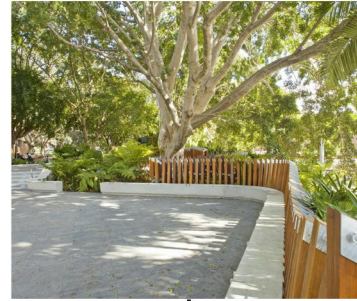
CENTRAL OPEN LAWN



ACTIVE WATER FEATURE



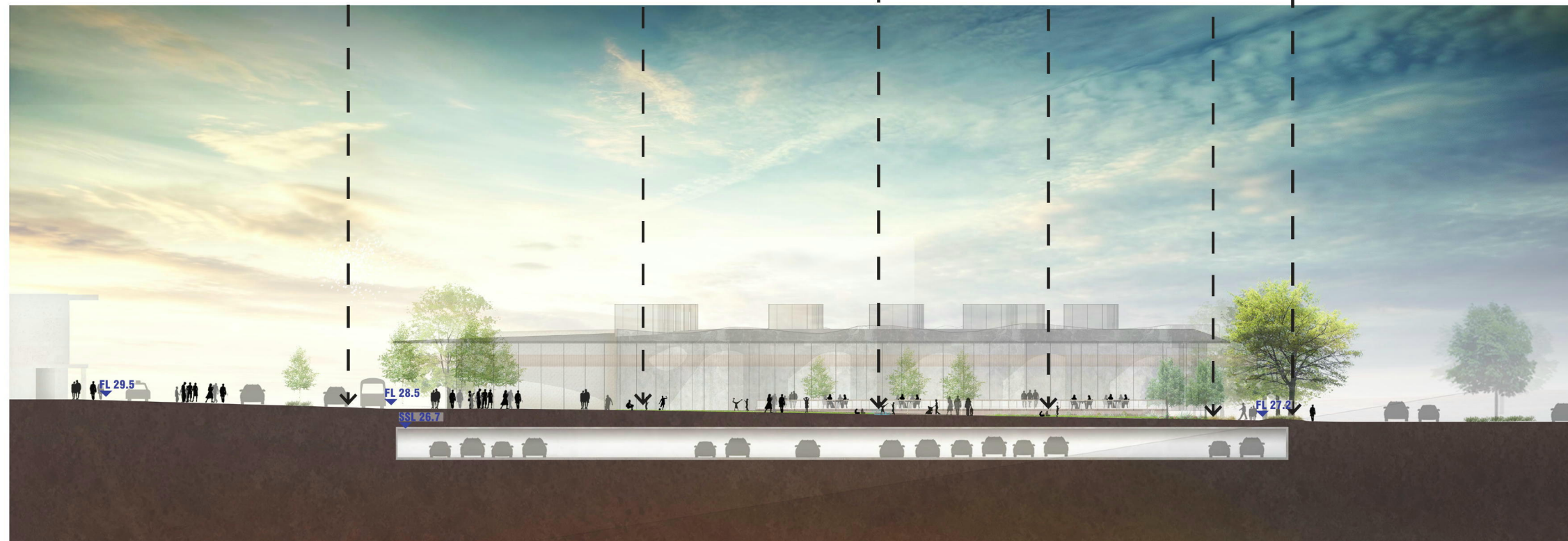
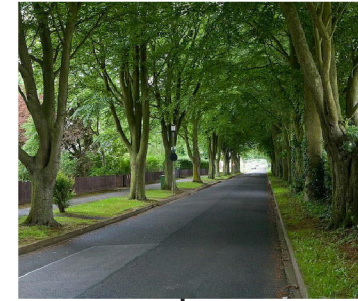
SEATING STRUCTURE



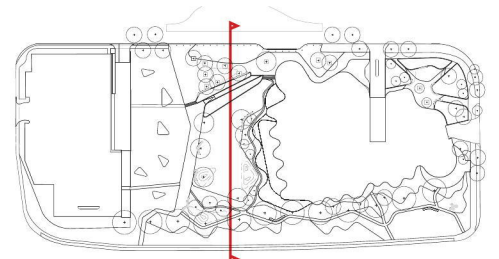
MASS PLANTING



AVENUE STREET TREE



KEY PLAN



LANDSCAPE SECTION - STAGE 1 PROPOSAL CIVIC CENTRAL B

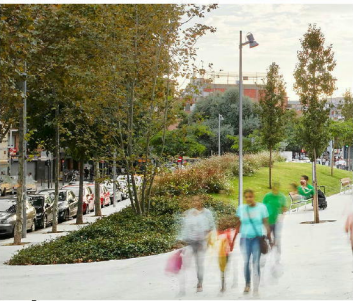
TEMPORARY SURFACE TREATMENT



PRIMARY PATHWAY



SOIL MOUNDING



PASSIVE OPEN LAWN



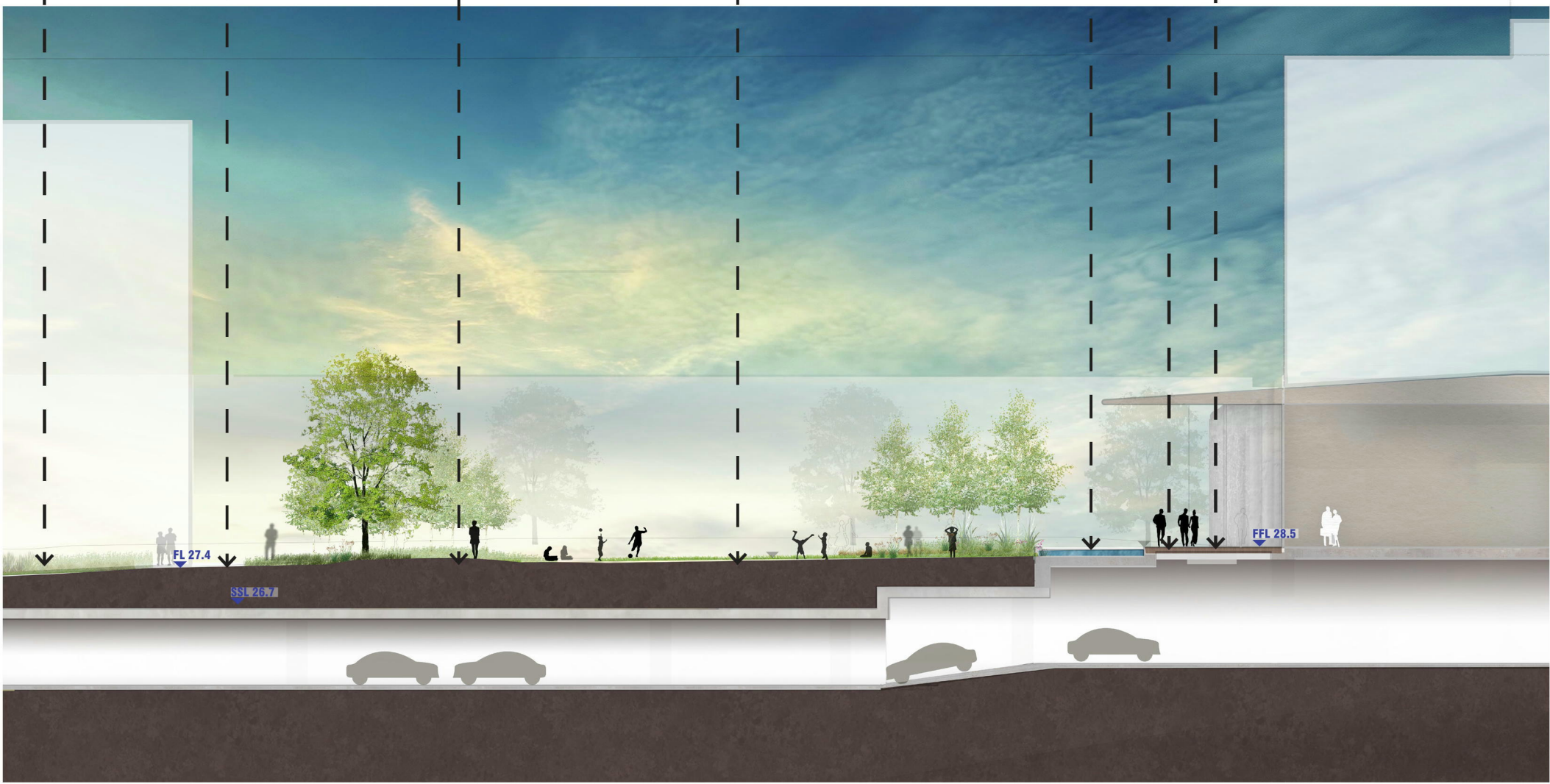
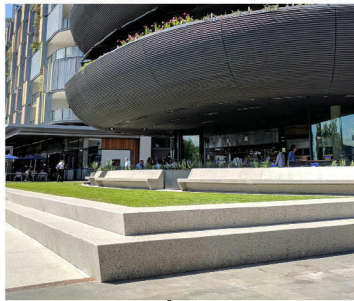
PASSIVE WATER FEATURE



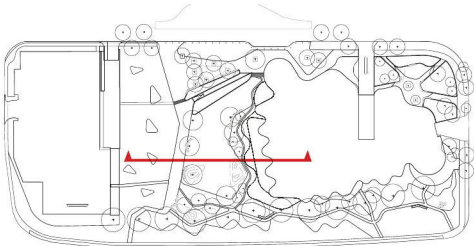
AQUATIC PLANTING



PRIVATE PODIUM SPILL-OUT



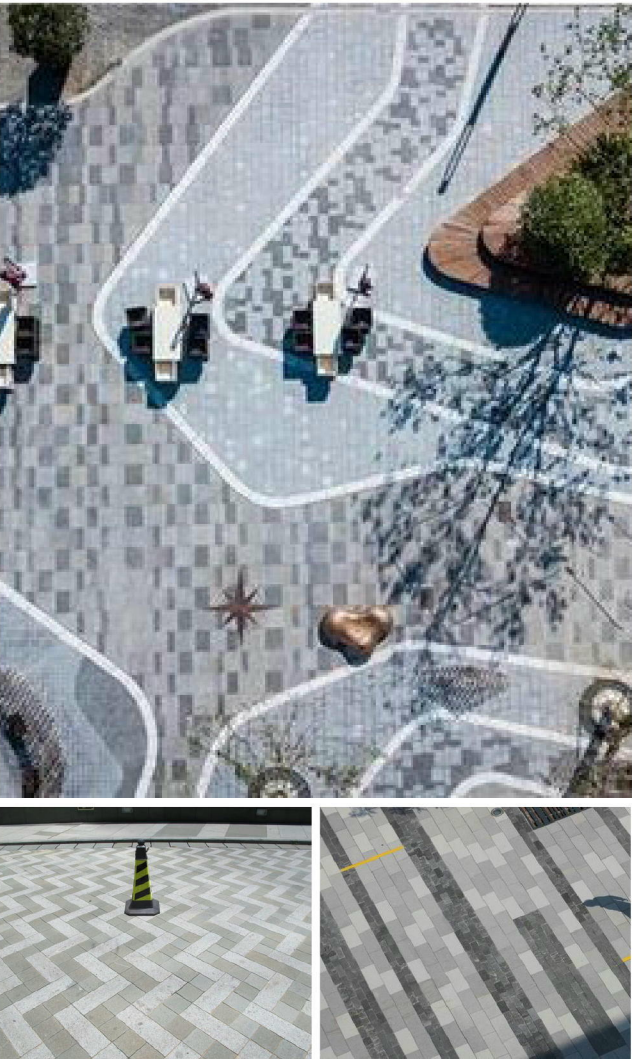
KEY PLAN



INDICATIVE MATERIALITY

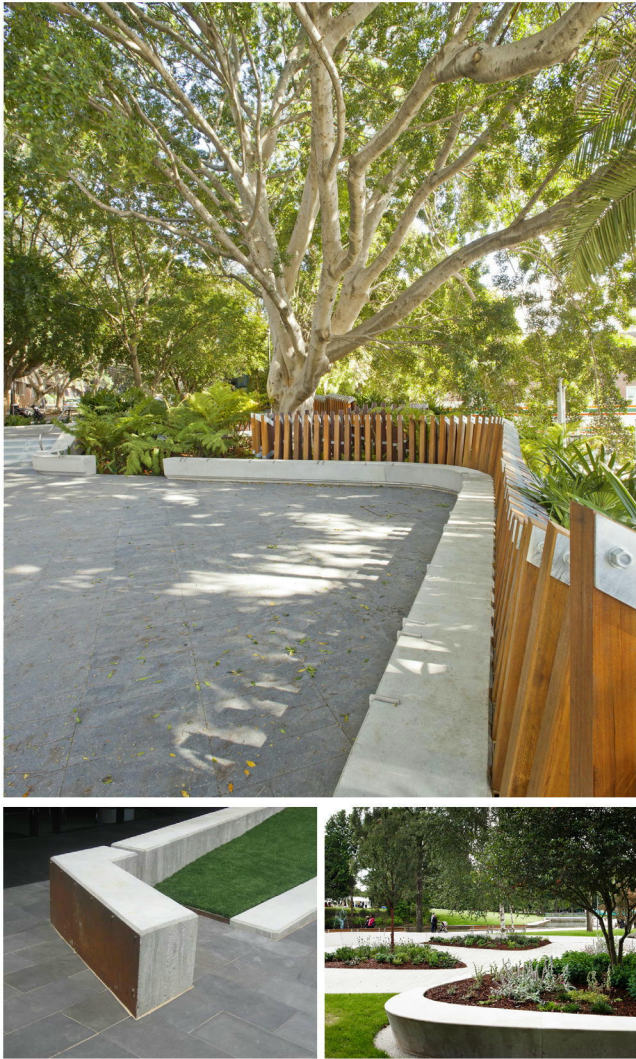
PAVING/SURFACE

High quality urban unit paving



WALLS AND EDGES

In-situ and precast concrete and steel



FURNITURE AND LIGHTING

Site specific custom timber and concrete furniture to suit a range of users



FEATURE ELEMENTS

Water features to comply with health and safety regulations



INDICATIVE PLANT SCHEDULE

Botanic Name	Common Name	Mature Height	Mature Spread
Trees			
<i>Angophora bakeri</i>	Smooth-Barked Apple	18m	10m
<i>Acer buergerianum</i>	Trident Maple	16m	5m
<i>Eucalyptus saligna</i>	Sydney Blue Gum	30m	10m
<i>Fraxinus angustifolia</i> 'Raywood'	Claret Ash	18m	6m
<i>Jacaranda mimosifolia</i>	Jacaranda	15m	15m
<i>Koelreuteria paniculata</i>	Golden Rain Tree	10m	8m
<i>Lagerstroemia indica</i>	Crepe Myrtle	4m	3m
<i>Melaleuca styphelioides</i>	Prickly Paperbark	8m	5m
<i>Sapium sebiferum</i>	Chinese Tallow Tree	7m	3m
<i>Tristaniopsis laurina</i>	Water Gum	10m	6m
<i>Waterhousea floribunda</i>	Weeping Lully Pilly	5m	3m
Shrubs			
<i>Banksia spinulosa</i> 'Bush Candles'	Hairpin Banksia	0.5m	0.6m
<i>Bursaria spinosa</i>	Sweet Bursaria	10m	3m
<i>Dodonea viscosa</i>	Giant Hop Bush	1.5m	1.2m
<i>Gardenia augusta</i>	Gardenia	1.5m	1.0m
<i>Kunzea ambigua</i> 'Rivan'	Kunzea Rivan	1-2m	1-2m
<i>Leptospermum rubrum</i> 'nana'	Red Dwarf Tea Tree	1m	1m
<i>Philodendron</i> 'Xanadu'	Philodendron	1.0m	1.0m
<i>Phormium tenax</i> 'Purpureum'	NZ Purple Flax	1.0m	1.0m
<i>Scaevola aemula</i>	Fairy Fan Flower	0.2m	0.8m
<i>Westringia fruticosa</i>	Coastal Rosemary	2.0m	1.5m
Ground Cover / Climbers			
<i>Eremophila glabra</i> "Sliver Emu Bush"	Silver Emu Bush	1.5m	1m
<i>Chrysocephalum apiculatum</i>	Common Everlasting	0.6m	1m
<i>Grevillea</i> 'Bronze Rambler'	Grevillea	0.3m	0.4m
<i>Hardenbergia violaceae</i>	Purple Coral Pea	1.5m (climber)	1.5m (climber)
<i>Myoporum parvifolium</i> "Yareena"	Yareen Myoporum	0.2m	1m
<i>Pandorea pandorana</i>	Wonga Wonga Vine	3m (climber)	5m (climber)
<i>Trachelospermum jasminoides</i>	Star Jasmine	6m (climber)	1.5m (climber)
<i>Viola hederacea</i>	Native violet	0.2m	0.5m
Grasses			
<i>Imperata cylindrica</i>	Cogon Grass	0.5m	0.5m
<i>Liriope muscari</i>	Lilyturf	0.6m	0.45m
<i>Poa labillardieri</i> 'Eskdale'	Tussock Grass	0.9m	0.6m

